

# ◇ XProtect Corporate

IP video surveillance for high security



XProtect Corporate is IP VMS designed for large-scale, high-security deployments that demand high-performance surveillance. Using the software's single management interface, system administrators can efficiently control all cameras and security devices regardless of the system's size or if it is distributed across multiple sites. For systems demanding supreme situational awareness and precise response to incidents, XProtect Corporate has interactive maps linked to alarms and included support for XProtect Smart Wall.

## ◇ Central management

Advanced group management concepts, inheritance of system settings and automated system management processes make it easy to set up and administrate XProtect Corporate regardless of its size or distribution.

Central management with customizable user interface allows users with different skill levels and responsibilities to administrate any aspect of the system from a single management interface.

## ◇ System redundancy

Failover recording servers maintain video viewing and recording capabilities with minimal interruption and video loss in the event of network problems, server failure, loss of power or any other system problem. Edge Storage is an additional redundancy option to ensure the continuous recording of video. Recordings are retrieved from the camera storage based on time schedules and events reducing the risk of missing evidence.

## ◇ High performance

High-performance recording servers with unique multi-stage video storage, including video grooming, provide efficient long-term storage, while all video remains online.

Native 64-bit operating system support enables flexible sizing and dimensioning of customer installations.



## Airports

XProtect makes it possible to gain a full overview of large facilities through one system. It is also easy to find and export encrypted evidence that can be shared with authorities to handle prosecutions or to resolve other issues.

### ◇ Quickly identify incidents

Interactive and multi-layered maps provide a comprehensive overview of cameras and layouts of the entire surveillance installation for quick detection of trouble areas.

Alarms are consolidated from all security devices and systems into one video-enabled, single-point Alarm Manager for immediate visual verification. Large, critical surveillance installations, such as alarm centers, gain rapid response time with the included XProtect Smart Wall.

### ◇ Mark and store video

Users can quickly sort through large amounts of video evidence by using advanced search tools such as Sequence Explorer and Smart Search.

The bookmark function allows users to mark video sections of particular interest and add descriptive notes to be analyzed or shared with other users.

### ◇ Ensure video credibility

Encryption of stored and exported video protects the integrity of video data while digital signing technology ensures the validity of the entirety of the evidence content when played back by law enforcement and public authorities.

High-security installations can protect the integrity of live and recorded video with strict user rights, such as restricting permission to: specific cameras, functions, individual user access or specific time periods.

## Distributed operation

**Milestone Federated Architecture™** is a system concept that enables users to connect multiple, individual XProtect Corporate and XProtect Expert sites so they can be operated as one large system with a central XProtect Corporate system. This provides operators with access to all cameras in the system, while all federated sites can be administered centrally.

**Milestone Interconnect** is a complimentary system concept that enables all Milestone video surveillance solutions to be centrally operated from a central XProtect Corporate system (see details on page 31).



## Did you know?

Kruger National Park in South Africa is using XProtect software to protect wildlife from poachers and being hit by speeding cars.

Park managers monitor vehicles entering and leaving park gates and track vehicles from poachers.

### Product facts

Number of cameras	Unlimited
Maximum number of servers	Unlimited
Milestone Interconnect	Management and supported
Milestone Federated Architecture	Management and supported

### Product highlights

- ▶ Scalable multi-server solution
- ▶ Centralized management
- ▶ High system availability
- ▶ Multi-stage video storage
- ▶ Encrypted video storage
- ▶ Evidence lock
- ▶ Situational awareness tools
- ▶ Metadata support
- ▶ Edge Storage
- ▶ Tiered management rights
- ▶ Customizable interface
- ▶ XProtect Smart Wall included
- ▶ System configuration API

## What's new in 2014

### Video metadata

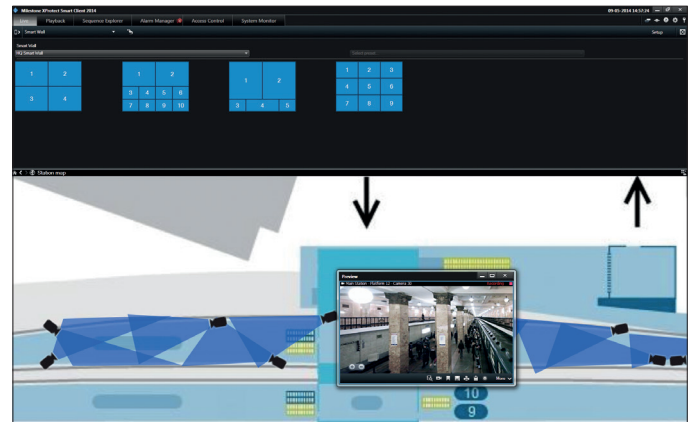
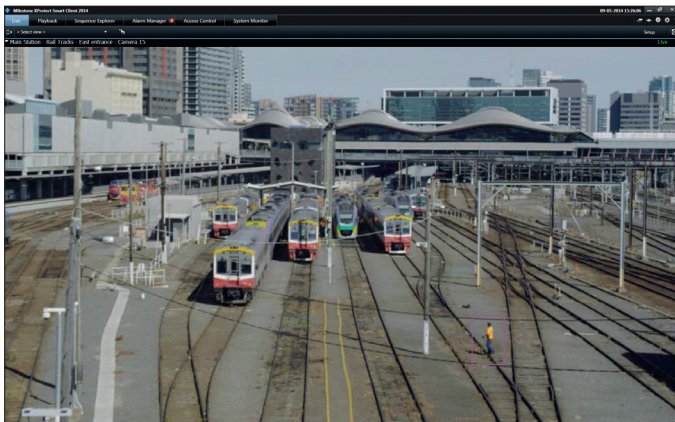
An ONVIF-compliant metadata framework enables transparent handling and storage of metadata from cameras and other sources. Support in MIP SDK makes external system access to metadata and native presentation in XProtect Smart Client possible.

### Bounding boxes

Metadata generated by edge-based video analytics in cameras can be used to identify and highlight objects with bounding boxes in both live and playback.

### XProtect Smart Wall included

XProtect Corporate 2014 includes XProtect Smart Wall, allowing customers to use Milestone's advanced video wall solution without additional licensing cost.



### Enhanced system security

Dual authorization offers an additional level of system security for customers operating in high-security areas, where users only are granted access to the system once a second user, or supervisor, has confirmed the log-in.

### Secure video recordings

Evidence Lock is a function that secures the availability of video recordings for investigations and allows XProtect Smart Client users to extend the retention time for video evidence by overriding defined video retention policies.

### External system control

Allow external systems to make changes to the system's configuration. This unlocks a range of new possibilities because it is possible to control system settings from external business systems and applications.

### Tiered management rights

It is possible to assign partial management permissions to system administrators, which is vital for any large installation with several administrators, each with their own dedicated areas of responsibility.

### Customizable management interface

The Management Client can be customized for different categories of system administrators, optimizing the interface for different roles and responsibilities.

### Automatic motion detection adjustment

Adjusts the sensitivity level to optimize motion detection for background noise levels in the video stream.

# XProtect Corporate

Customer story - Paul Smith



XProtect Corporate made it possible to gradually transition all of UK-based retailer Paul Smith's surveillance systems from analog to IP technology.



## Retail shops

XProtect makes it possible to gain a full overview of large facilities through one system. It is also easy to find and export encrypted evidence that can be shared with authorities to handle prosecutions or to resolve issues.

## Global migration to long term IP video solution

XProtect Corporate is being used in all of UK-based retailer Paul Smith's 45 stores around the world. The system is mainly used for loss prevention, but will also provide vital business intelligence to retail operations management.

"The fact that Milestone XProtect is built on open platform architecture using Microsoft Active Directory makes rapid roll out possible, as well as cost-effective maintenance and support. Selecting Milestone XProtect enables us to migrate the whole CCTV estate onto a single platform to establish uniformity and consistency." said Paul Smith's head of IT, Lee Bingham.

XProtect Corporate makes it possible for Paul Smith to control which managers can see cameras from different stores around the world. This helps reduce costs because managers do not necessarily need to physically visit a store to solve issues. Lee Bingham explains:

"We can now log in via the Milestone XProtect Smart Client front-end and retrieve live and recorded video from all the cameras anywhere in the world. If there is a problem, we can generally fix it via the network from Nottingham, England without getting on a plane. This saves management time and reduces our company's carbon footprint."